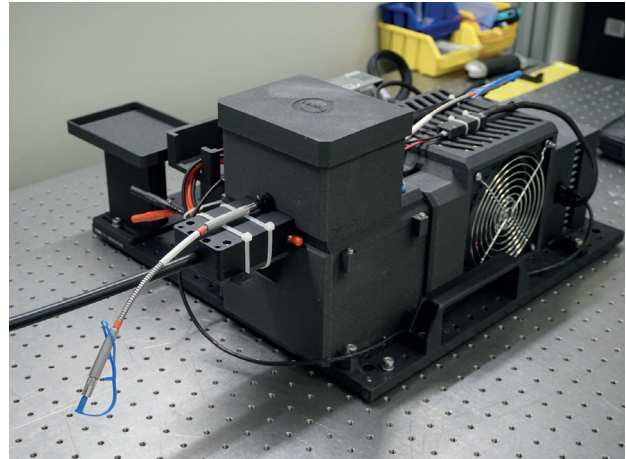


# THERMOCONTROL BY OPTIXS

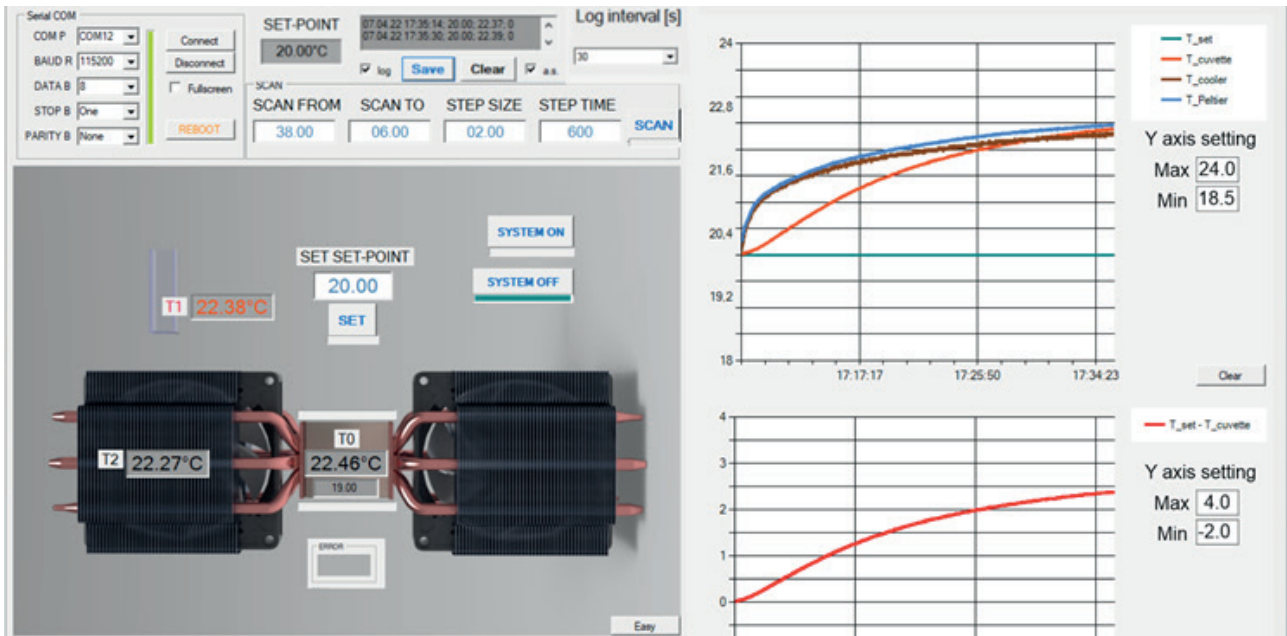
Thermoelectric spectroscopy electroporation cuvettes holder device with software controlled non-contact temperature regulation

## Parameters:

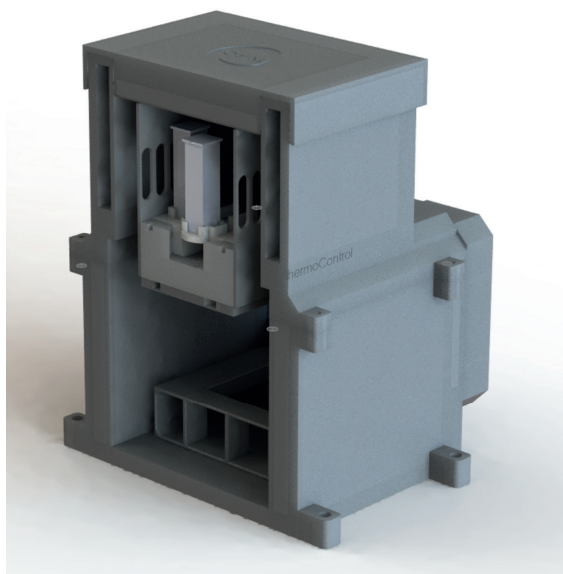
Heat exchange: Thermoelectric  
 Heat exchange: Air to air  
 Range: +5 to +40 °C  
 Temperature stability: <0.05 °C  
 Material: PLA/PETG  
 Power supply: 12 V, 25 A  
 Software platform: Windows  
 Data logging: csv file  
 Functions: hold, scan



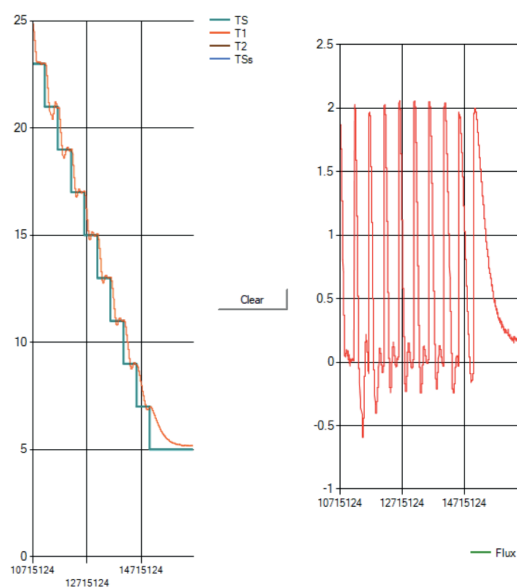
## Custom software



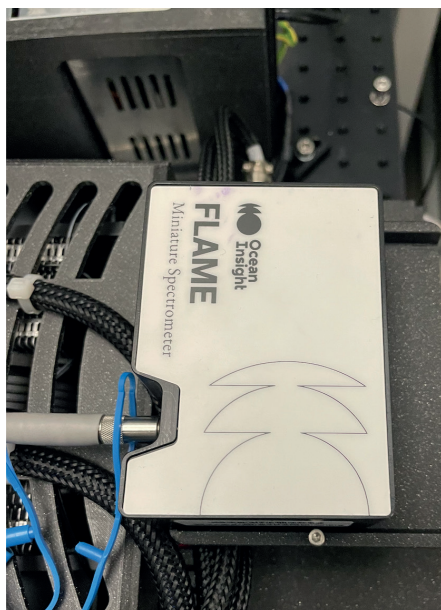
### Chamber design



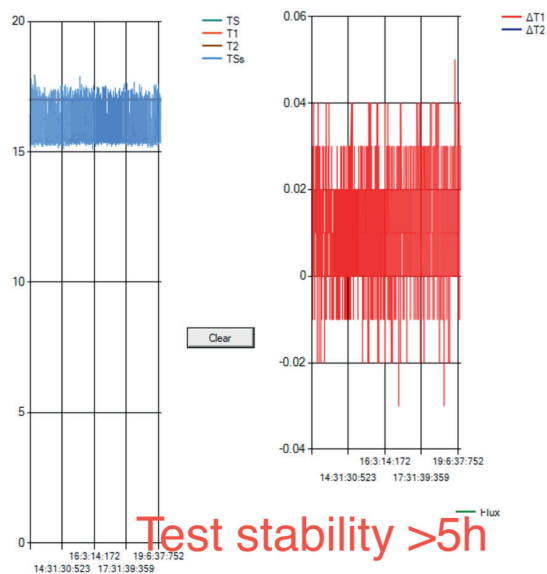
### Scan function



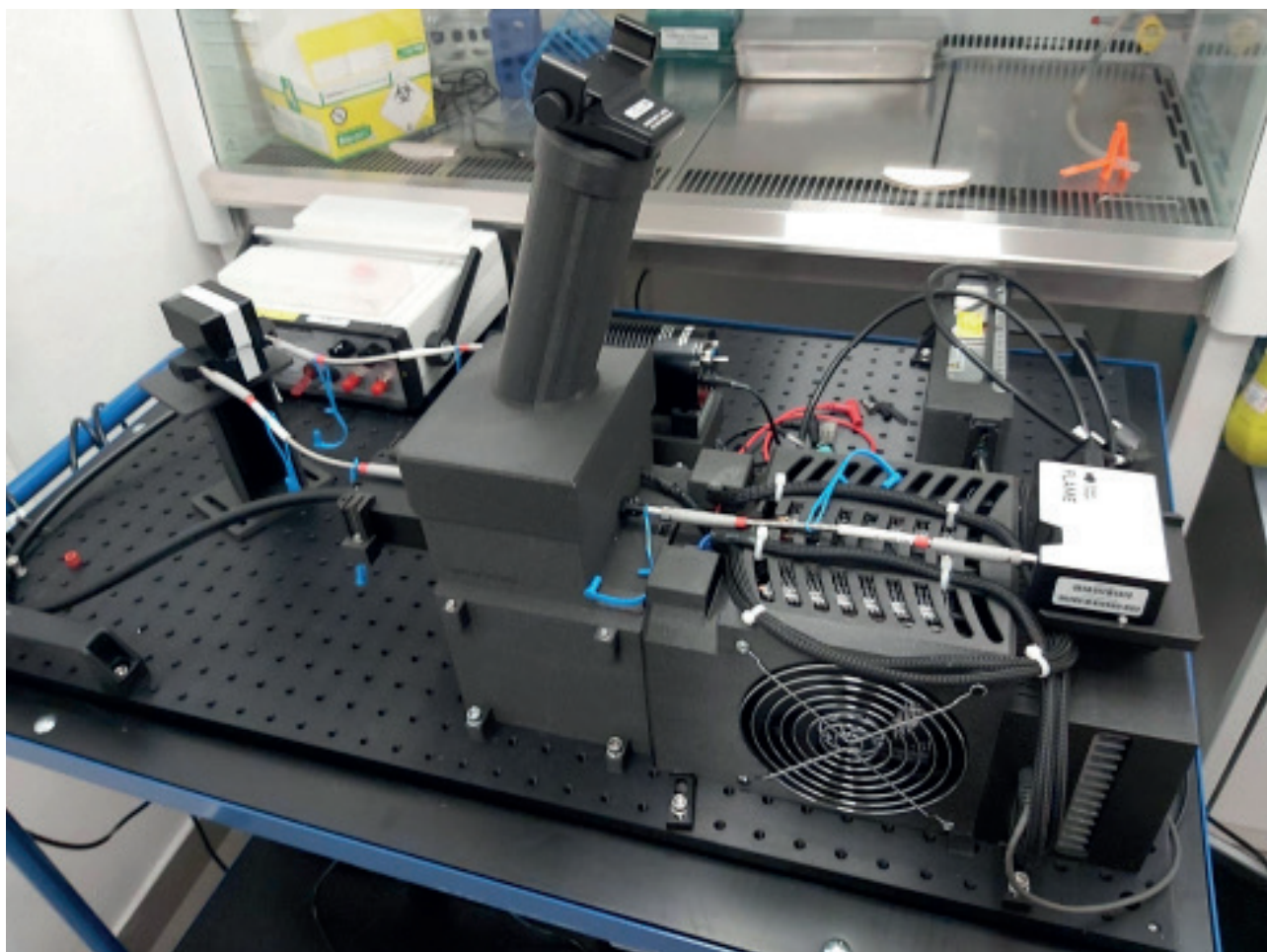
### Spectrometer location



### Stability test



## Thermocontrol



Full setup with optical fibers, filter holder, white light source, spectrometer and top lid with tube holder for thermal imaging camera.