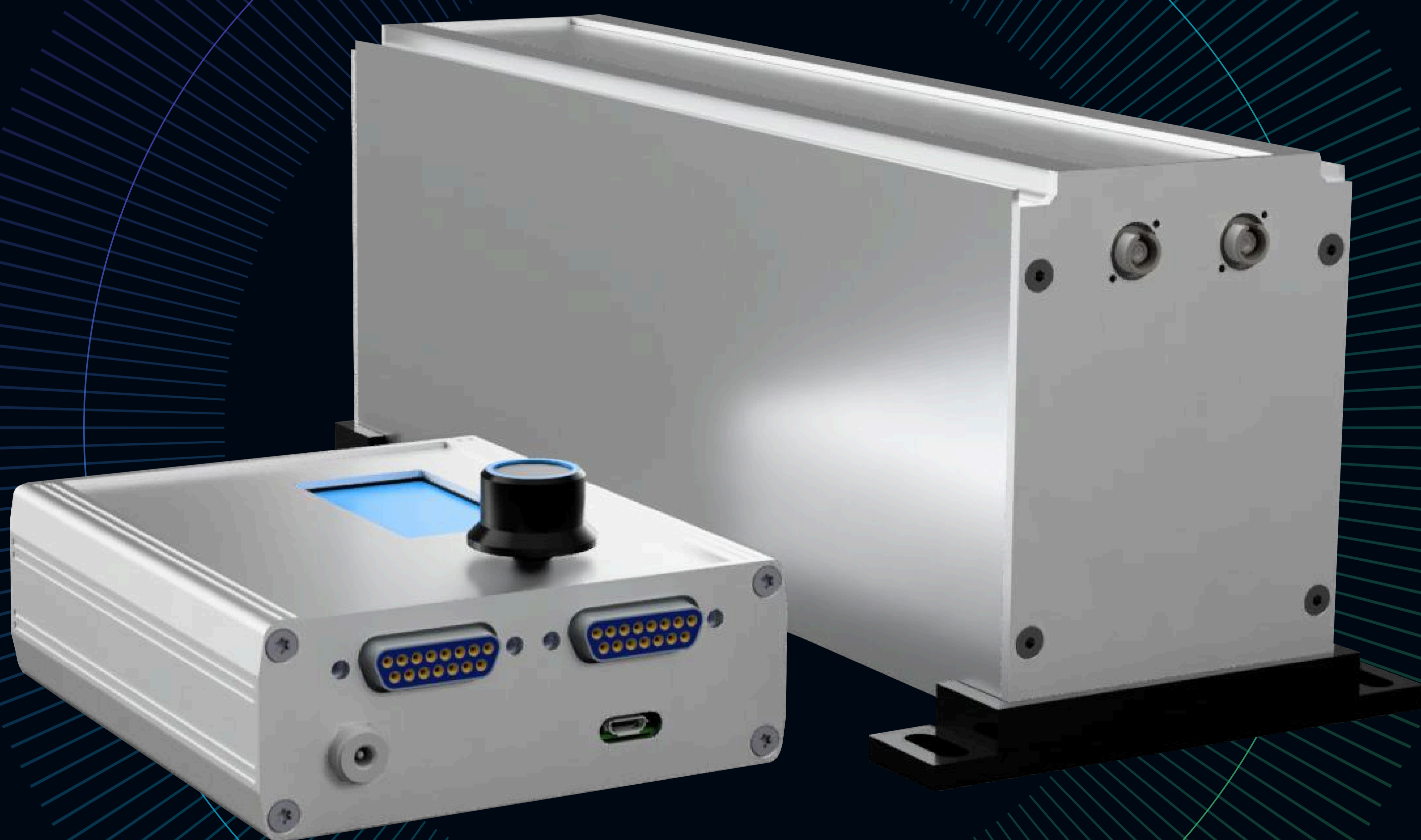


FODL-SA

Fiber optic delay line (stand-alone version)



Product overview

Our fiber optic delay line is designed to allow a precise variation of the optical path length within a range up to 660 ps and with an unprecedented resolution of < 0.33 fs. The delay line comes with a high-resolution stepper motor and a separate controller which enables both direct manual and computer based remote operation of the device. Up to 2 delay lines can be driven by the same controller. FC/APC connectors are used as a standard on the optical input / output, but FC/PC option is also available.

Variants

(any combination of the parameters can be chosen)

Operating wavelength:	<div>1550 nm / 2000 nm</div>
Optical delay range:	<div>330 ps / 660 ps</div>
Fiber type:	<div>polarization maintaining (PM) / single mode (SM)</div>
Fiber connectors:	<div>FC/APC / FC/PC</div>

Full specifications

Specification	Delay lines			
Operating wavelength [nm]	1550		2000	
Optical delay range [ps]	330	660	330	660
Typical insertion loss [dB]	1.4	1.7	2.2	2.3
Insertion loss uniformity [dB]	0.25	0.35	0.25	0.35
Return loss ¹ [dB]	> 50			
Optical delay resolution [fs]	< 0.33			
Polarization extinction ratio ² [dB]	> 20			
Max power [mW]	1000		2000	
Position accuracy [μm]	± 10			
Position repeatability [μm]	± 1			
Fiber type	PM-1550 / SM-1550		PM-1950 / SM-1950	
Fiber connectors	FC/APC, FC/PC			
Dimensions (delay line) [mm]	76.4 × 106 × 231.5 ³ / 76.4 × 106 × 286.5 ⁴			
Dimensions (controller) [mm]	105.4 × 54 × 128			
Weight (delay line) ⁵ [kg]	2 / 2.5			
Weight (controller) [kg]	0.6			
Operating temperature ⁶ [°C]	10 - 40			
Storage temperature [°C]	-30 - 70			
Power requirements	12/24V, 1.5 A			
Control	direct via controller knob, remote via USB			

¹ For version with FC/APC connectors

² For version with PM fibers

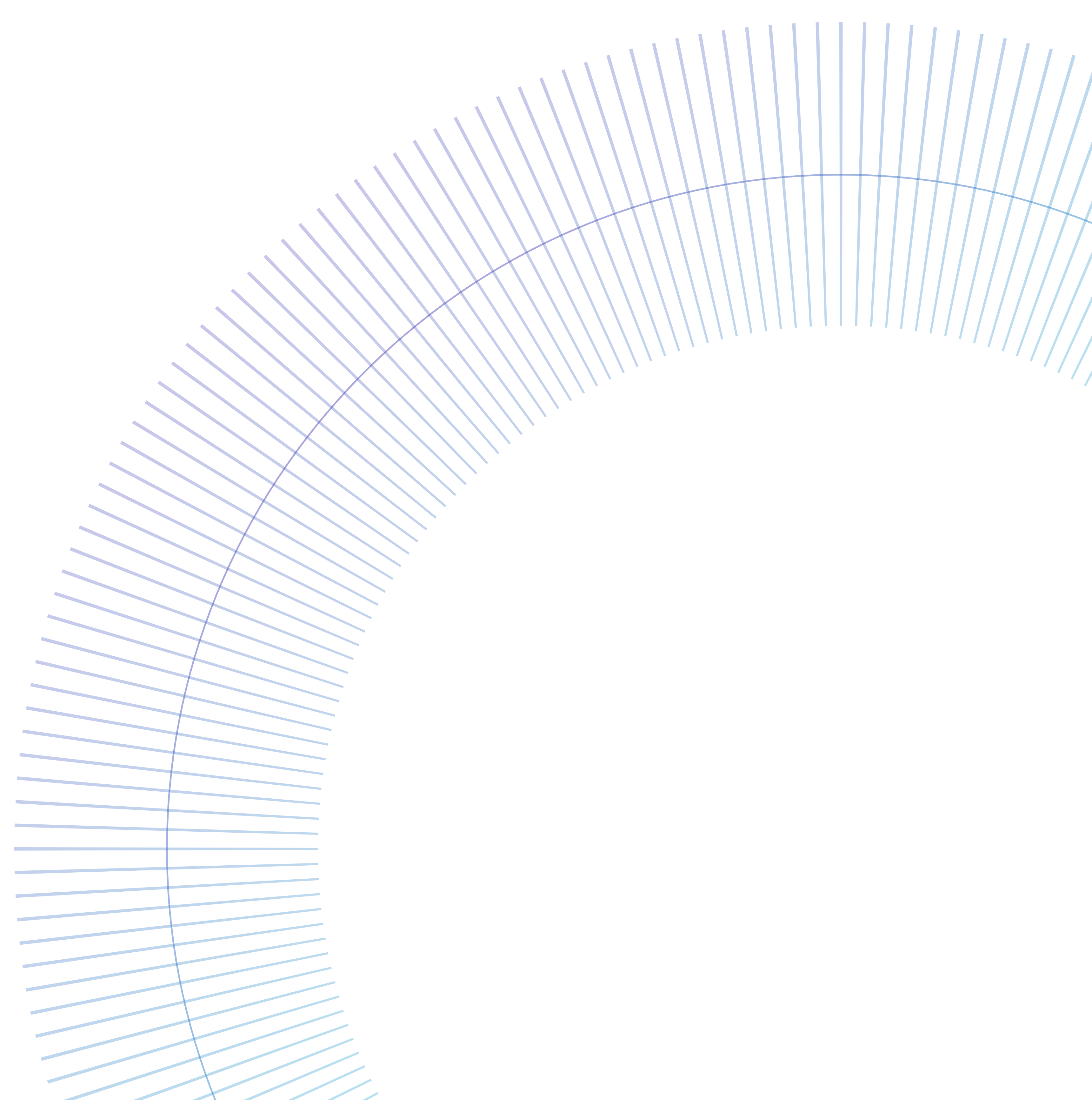
³ 330 ps version

⁴ 660 ps version

⁵ Values for 330 ps and 660 ps versions, respectively

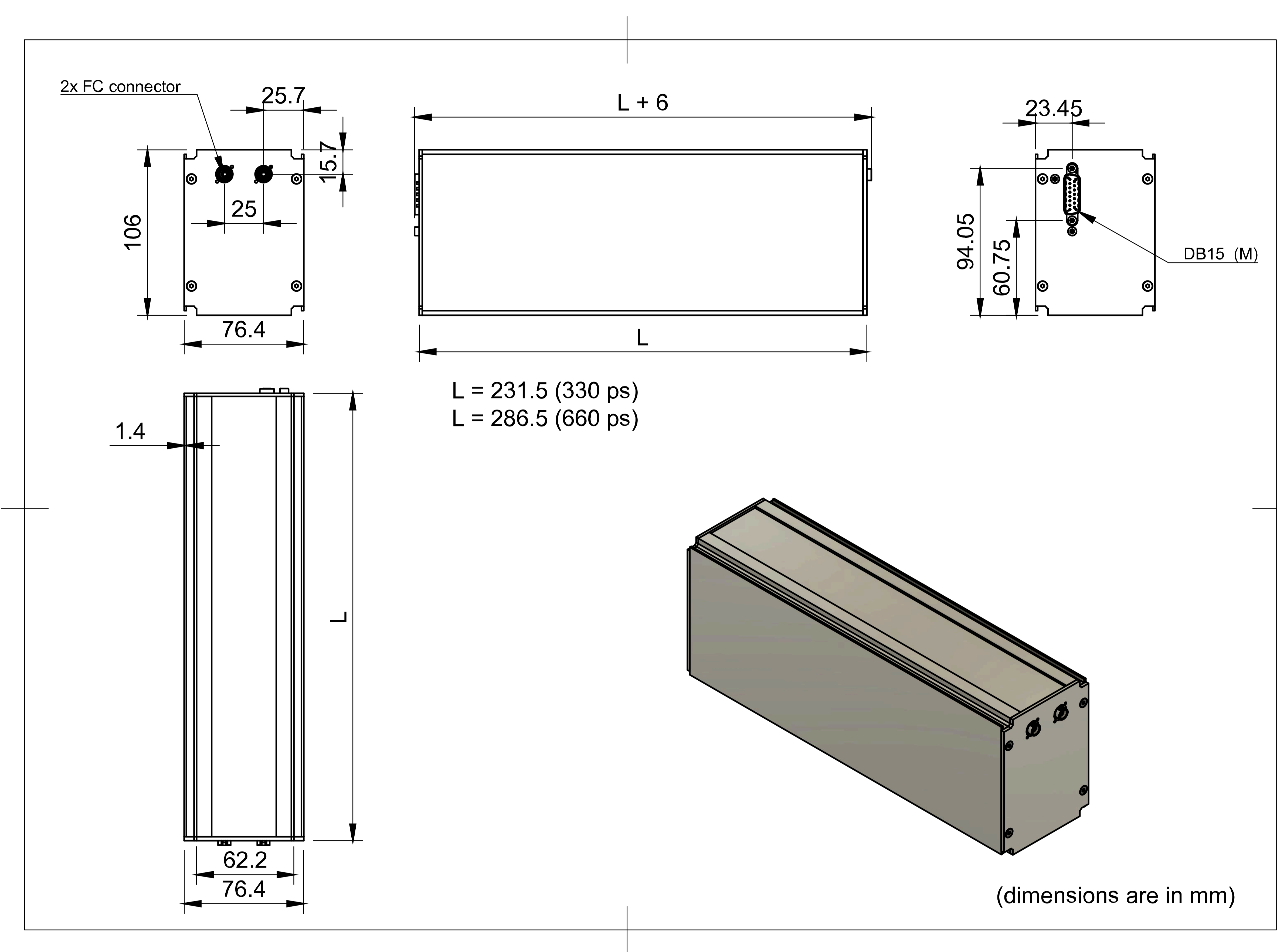
⁶ Range of temperatures where temperature-driven additional insertion loss < 1 dB is maintained

Features

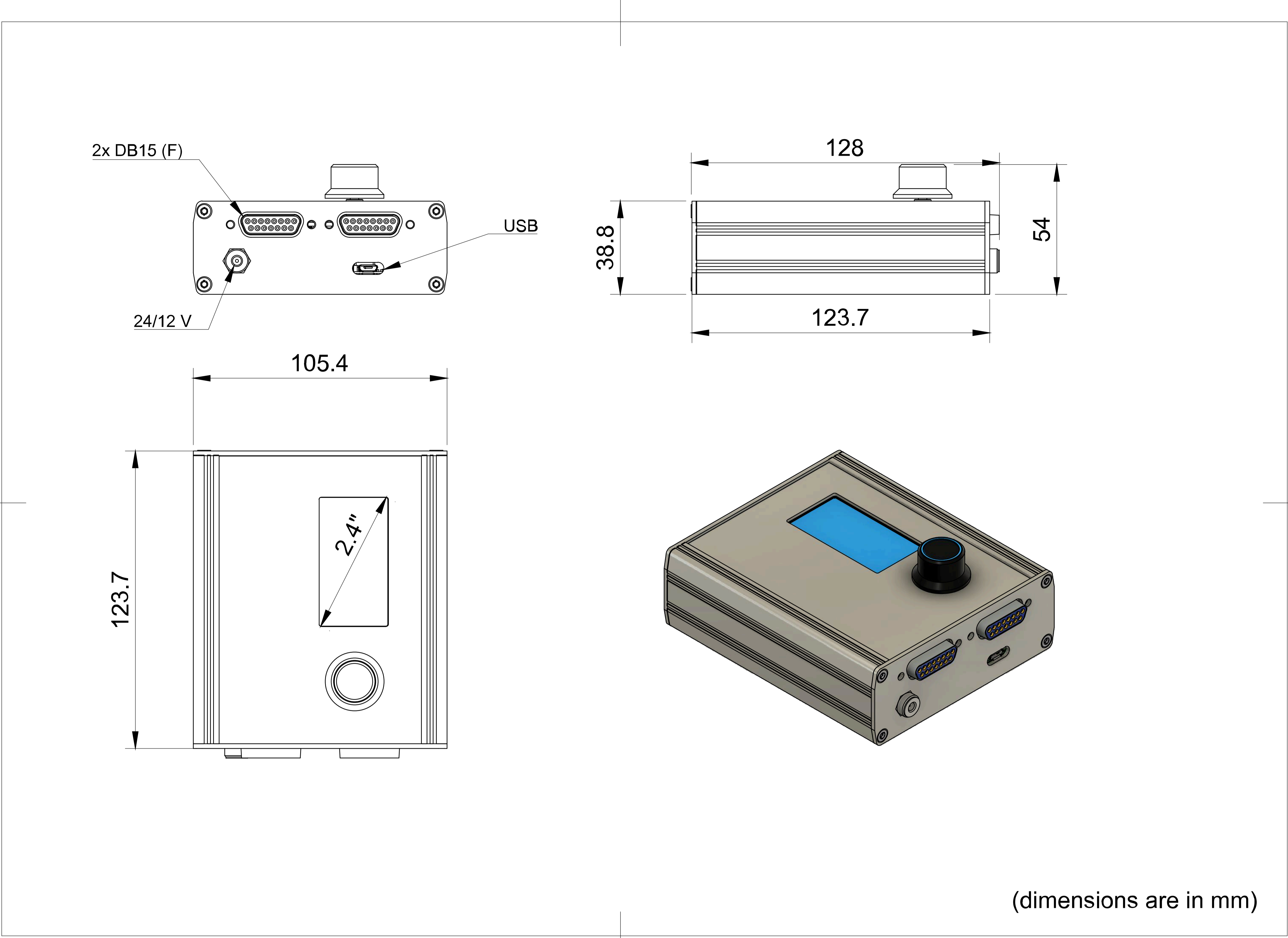
- ✓ High resolution (< 0.33 fs)
 - ✓ Low insertion loss even at 2000 nm
 - ✓ Controller with display and knob for direct manual operation
 - ✓ USB connection for remote control
 - ✓ 2 delay line units can be driven by the same controller
 - ✓ Compatible with our modular rack system for delay lines (FODL-MDX)
 - ✓ Support legs for non-deformative mounting of the delay line unit on standard optical tables and breadboards
- 

Mechanical drawing

Delay line unit:



Controller:



Order information

Delay lines

Individual stand-alone delay lines can be ordered by a product number created as follows. Note that the delay lines can be purchased also as modular inserts for 19" subracks (see FODL-MDX for more information).

FODL-**WWW**-**DDD**-**TT**-**CCC**-SA

- WWW = operation wavelength:

1550

/

2000
- DDD = optical delay range:

330

/

660
- TT = fiber type:

PM

/

SM
- CCC = fiber connector:

PC

/

APC



Example:

Delay line operating at 1550 nm, with optical delay range 660 ps, SM fibers, and APC connectors:

FODL-1550-660-SM-APC

Controller

The controller for stand-alone delay lines (capable of driving up to 2 units) can be ordered by the following product number.

FODL-CRTL-2-SA



OptiXs, s.r.o.

IČ: 02 016 770,
DIČ: CZ 02 016 770,
Křivoklátská 37,
CZ, 199 00 Praha 9



Developed in collaboration
with the HiLASE

www.optixs.cz